

# CHALET ROBINSON

*Event Venue*



CATALOGUE





# INTRO

*Hello*

THE DESCRIPTION	_____	04
THE PLAN	_____	05
THE SPACES	_____	07
Ground floor		
First floor		
Terrace with tent		
Entire chalet		
THE CONTACT DETAILS	_____	14

# THE DESCRIPTION

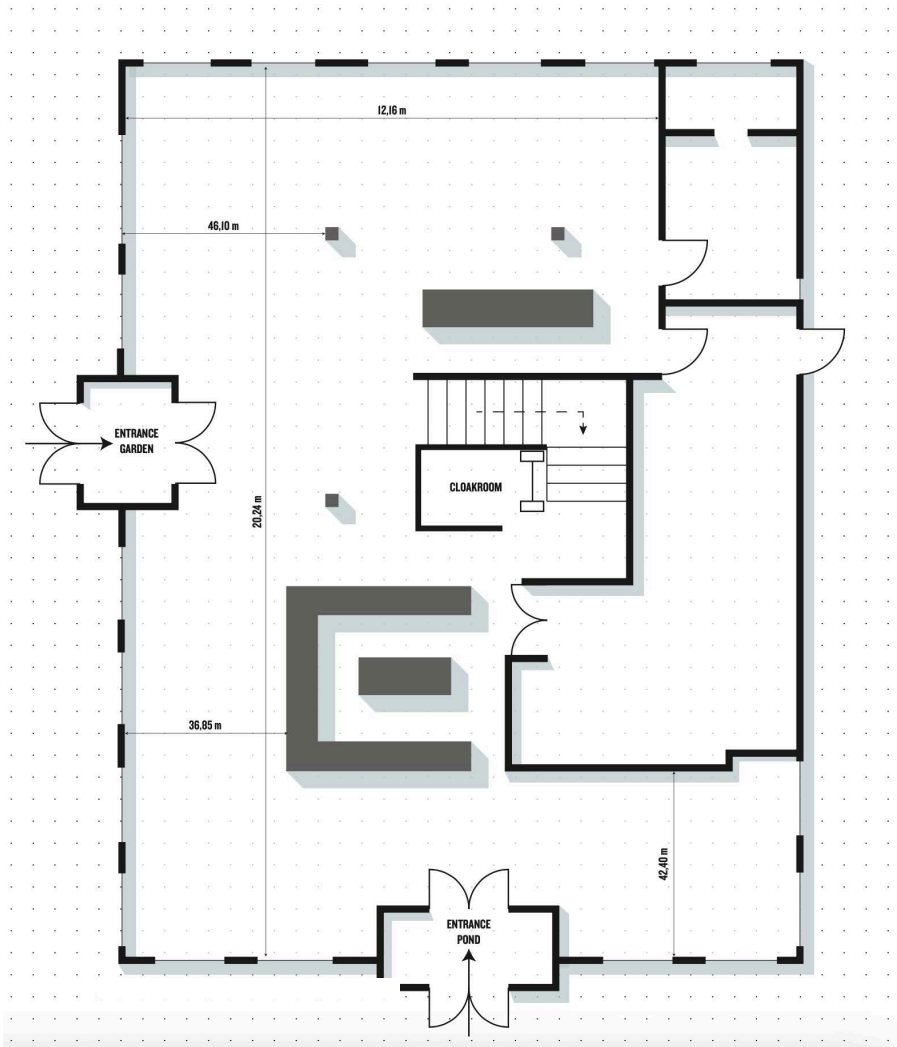
## IMMERSED IN NATURE

Chalet Robinson, nestled on a mythical island in the heart of the Bois de la Cambre, offers a unique getaway, miles away from the hustle and bustle of Brussels. Accessible by a barge crossing the lake, this extraordinary spot transports you to a lush and peaceful setting. The chalet blends rustic charm with modern comfort. Visitors can enjoy a spacious air-conditioned hall, a garden, a shaded terrace, and state-of-the-art facilities for private or professional events!



# THE PLAN

## GROUND FLOOR



## FIRST FLOOR & UPPER COVERED TERRACE





# THE SPACES

## Ground floor

SUPERFICY  
Terrace

240 m<sup>2</sup>  
130 m<sup>2</sup>

COCKTAIL	270 persons
SEATED DINNER	110 persons
CONFERENCE	95 persons
WALKING DINNER SEATED	80 persons
WALKING DINNER STANDING	180 persons
EVENING PARTY	300 persons

The ground floor is the most favored space that welcomes you with its warm wooden interior. You can combine it with its terrace or its winter tent.







# THE SPACES

*Terrace with tent*

SUPERFICY  
Terrace

280 m<sup>2</sup>

COCKTAIL	400 persons
SEATED DINNER	250 persons
CONFERENCE	300 persons
SEATED WALKING DINNER	180 persons
STANDING WALKING DINNER	320 persons
EVENING PARTY	-





# THE SPACES

*First floor*

& UPPER COVERED TERRACE

SUPERFICY	160m <sup>2</sup>
Terrace covered first floor	40m <sup>2</sup>

COCKTAIL	250 persons
SEATED DINNER	180 persons
With terrace	210 persons
CONFERENCE	230 persons
SEATED WALKING DINNER	180 persons
With terrace	210 persons
SEATED WALKING DINNER	200 persons
EVENING PARTY	250 persons

The first floor offers an unparalleled view of the pond and the woods, especially from the wooden terrace.







Flarken

Bitte  
nicht die Flarken  
zu den  
anderen  
nehmen

# THE SPACES

*Entire chalet*

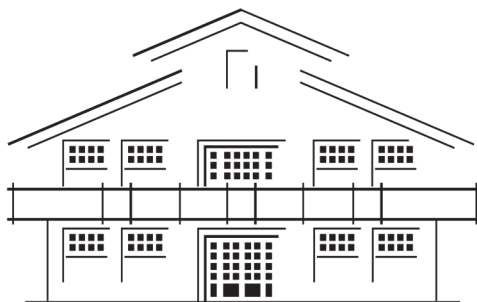
SUPERFICITY	570m <sup>2</sup>
COCKTAIL	350 persons
With tent	530 persons
SEATED DINNER	200 persons
With terrace	220 persons
WALKING DINNER	530 persons
OUTDOOR CEREMONY	80 persons











# CHALET ROBINSON

**LET'S WORK**  
*Together*

+32 2 359 92 40

info@chou.be

[www.chouxdebruxelles.be](http://www.chouxdebruxelles.be)

Sent. de l'Embarcadère 1, 1000 Bruxelles