



*(re)*space

(RE)SPACE AIRPORT

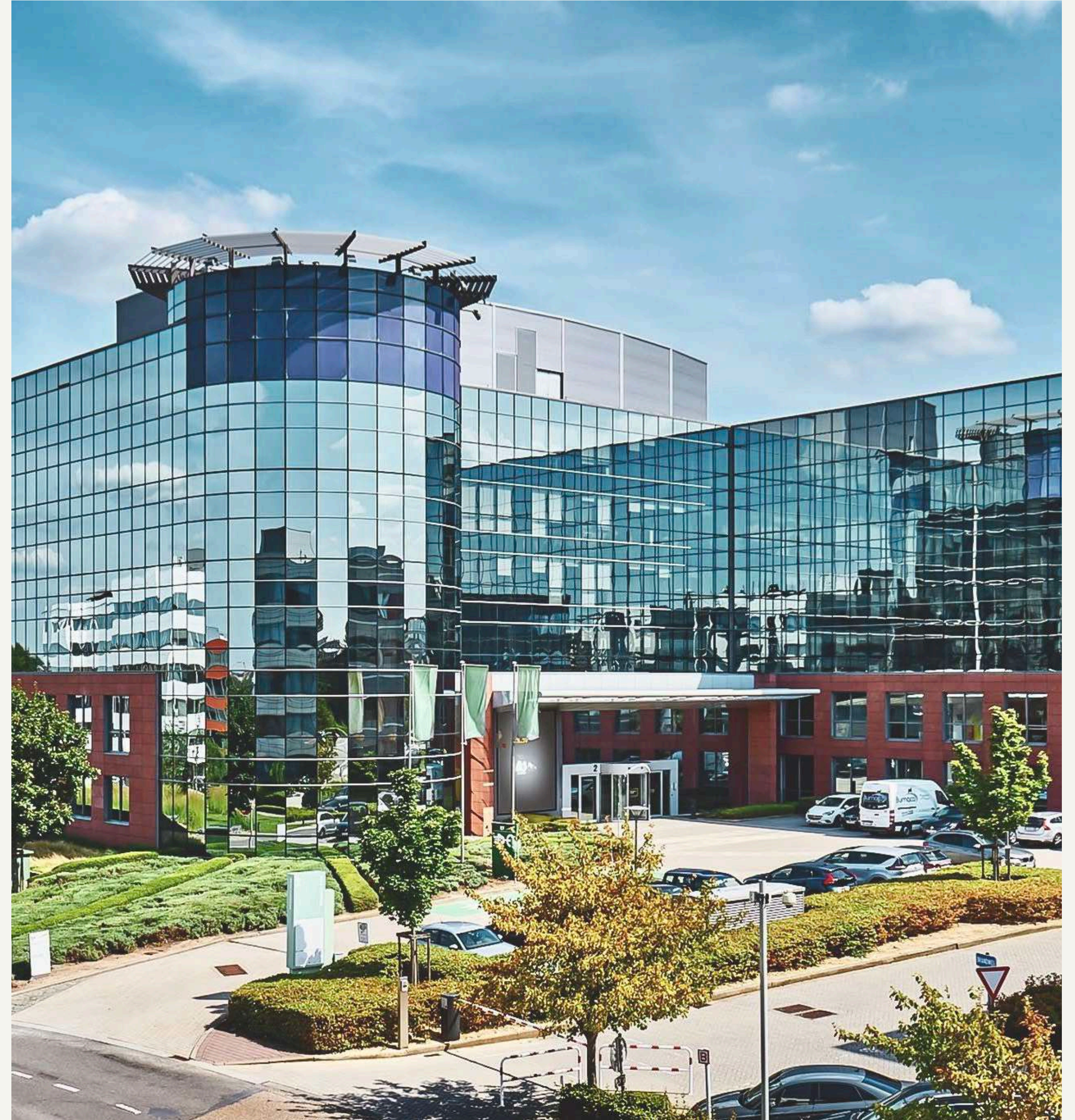
We Create Value
with Vacant Property

MADE TO MEET, WORK & GATHER

(re)space

(RE)SPACE AIRPORT

YOUR BUSINESS
CULTURE HUB
IN THE MIDDLE OF
GLOBAL CONNEXIONS



A statement location. Where business meets design.

Located in the heart of the Pegasus Business Park and just **minutes from Brussels Airport**, (re)space Airport offers an exceptional setting. With direct access by **car, train, or bike**, commutes remain smooth and stress-free.

This place becomes a **new connection point for work, meetings, and events**, in an environment designed to foster comfort, efficiency, and creativity.

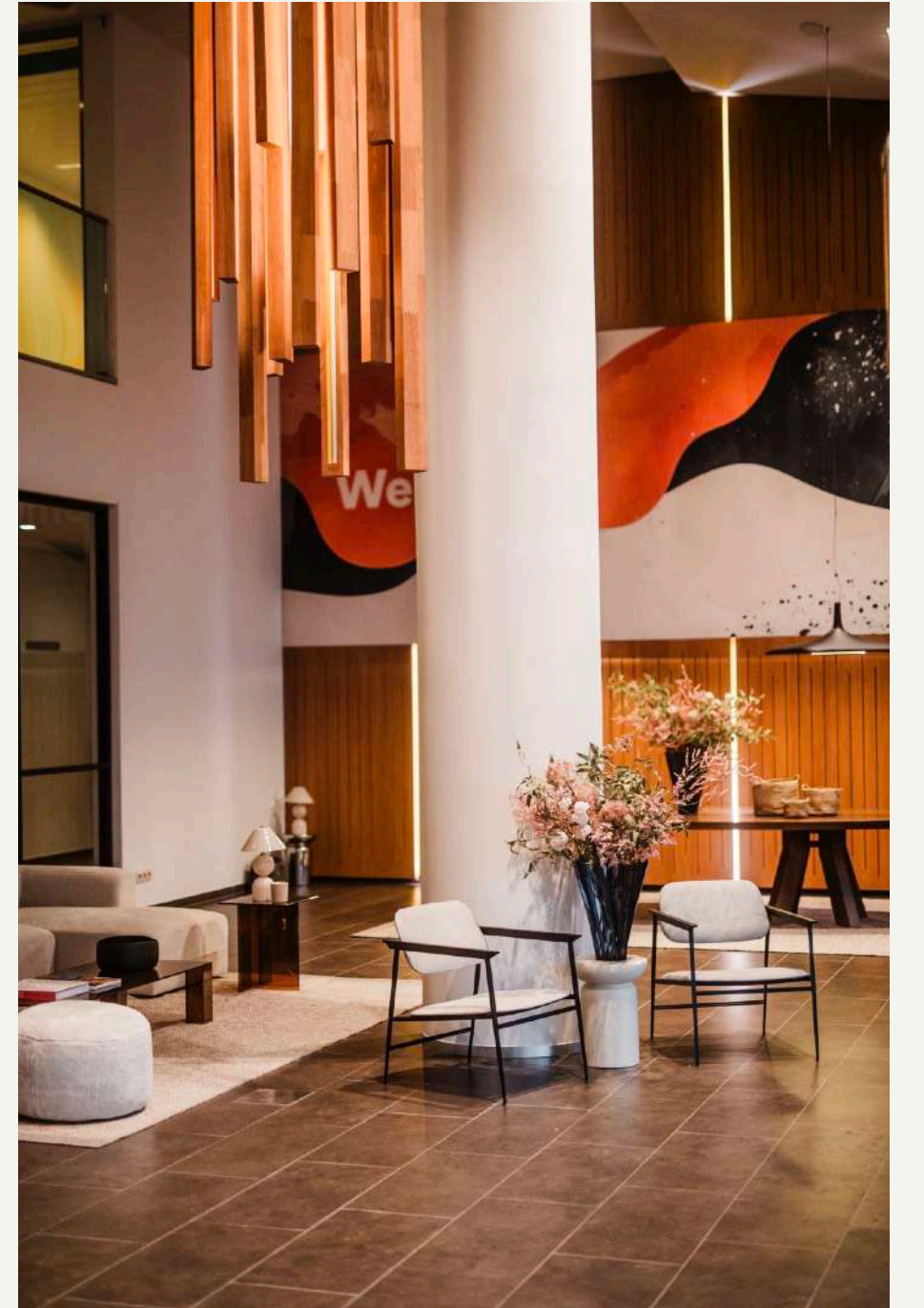
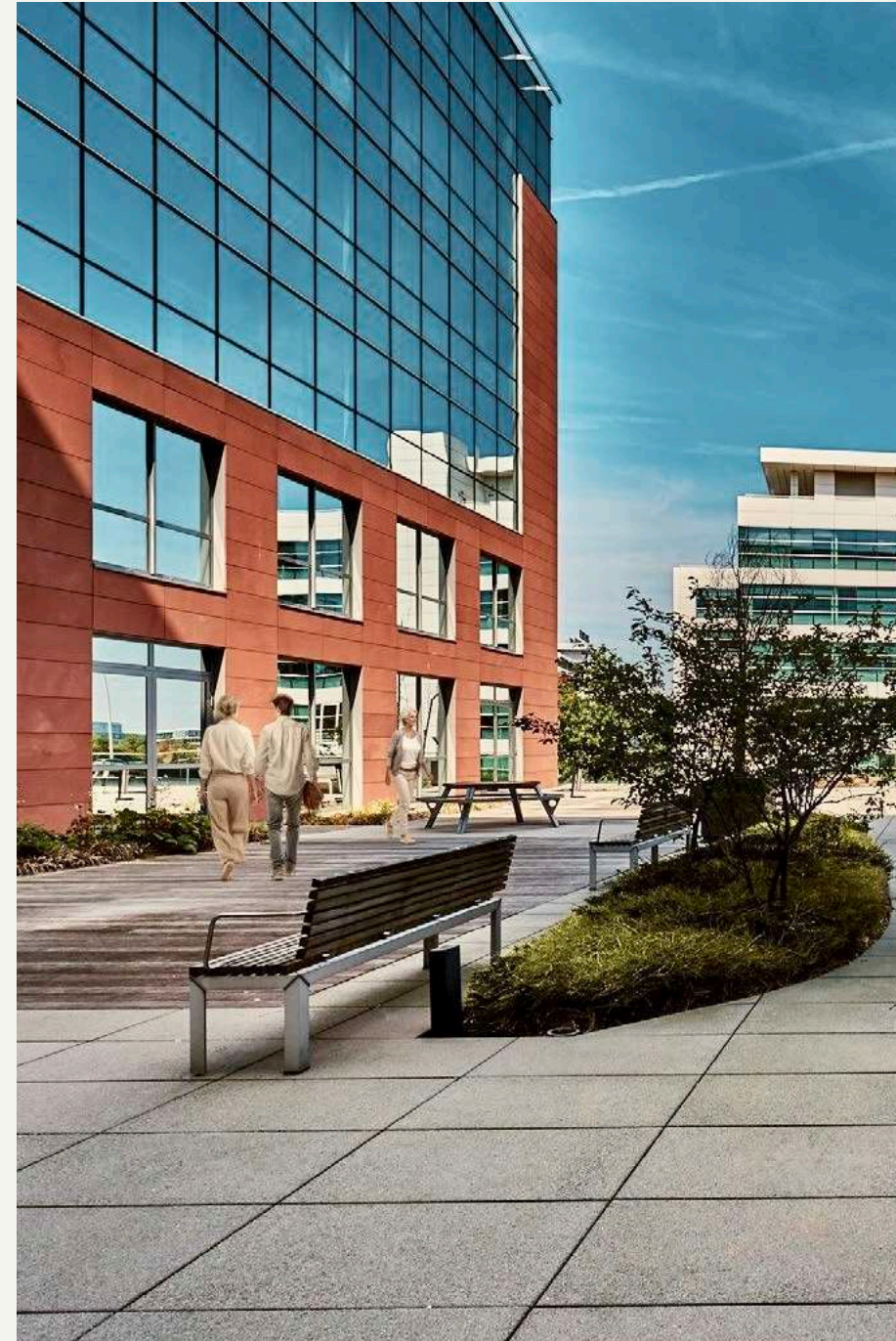
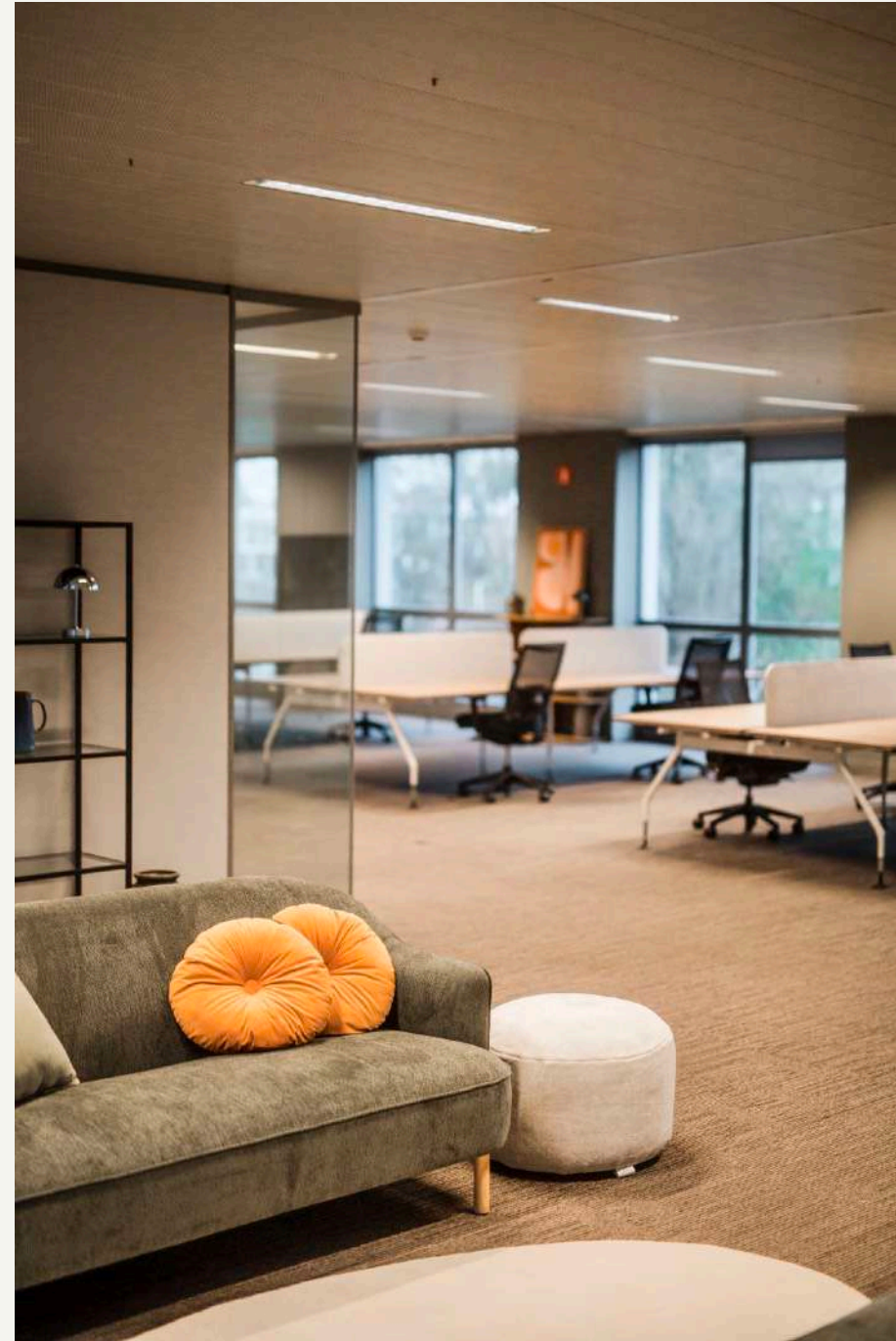


2 DE KLEETLAAN, 1831 DIEGEM

<https://share.google/fW4dfh17gJ8XWOLml>

(re)space

AIRPORT



01

The *Building*

Business & Conference Center.

(re)space Airport features **three spacious event zones** and a **sunlit terrace**, offering flexible configurations for conferences, seminars, product launches, corporate receptions, team-building sessions, and training days. Combined with **plug-and-play meeting rooms**, (re)space Airport is the destination that helps ideas take flight, literally.

In addition to its event and meeting facilities, the building also offers **unfurnished or fully equipped office spaces** across the 1st to 5th floors, providing dynamic, ready-to-use work environments for teams seeking a flexible professional home base.

Whether you're hosting an international summit, an intimate strategy session, or settling into a long-term office setup, (re)space Airport delivers a **cohesive ecosystem of spaces and services** designed to support productivity, creativity, and connection, all under one roof.

The Ground Floor

WHERE BUSINESS, LIFE
AND COMMUNITY MERGE

CAPACITY

2,140 sqm

WELCOME DESK & LOBBY

with dedicated team at your service

EVENT VENUES

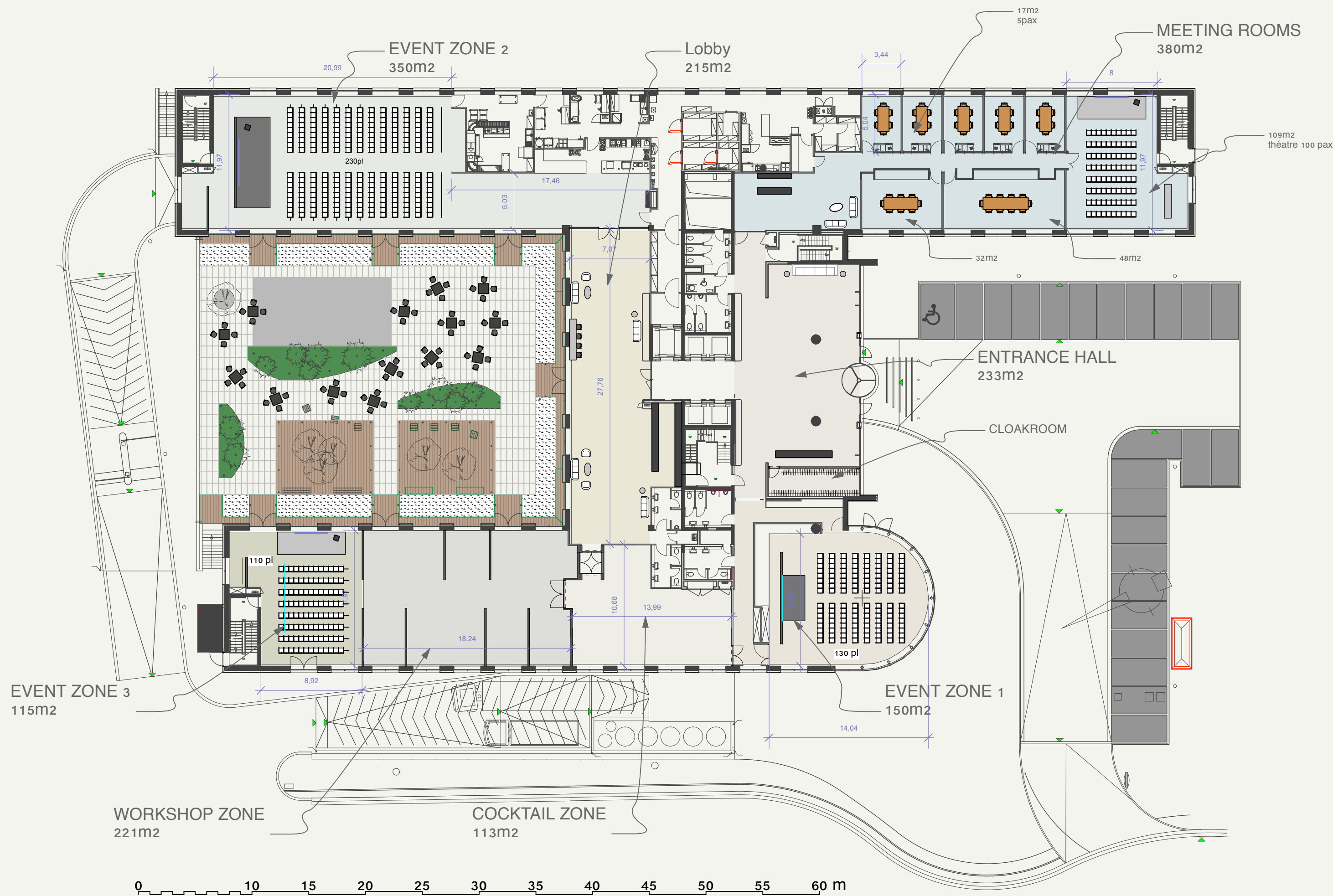
3 event areas from 100 to 230 people

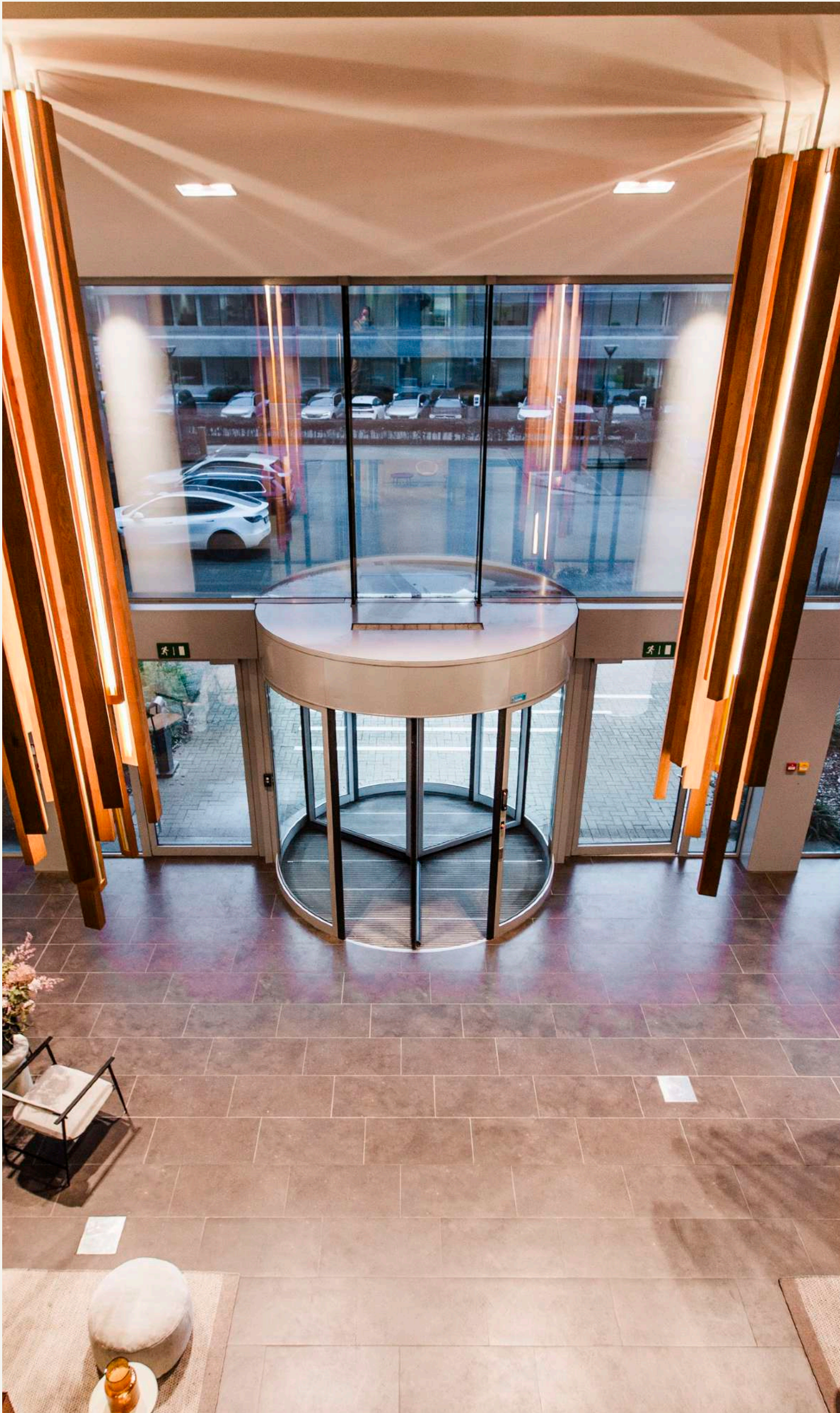
MEETING ROOMS

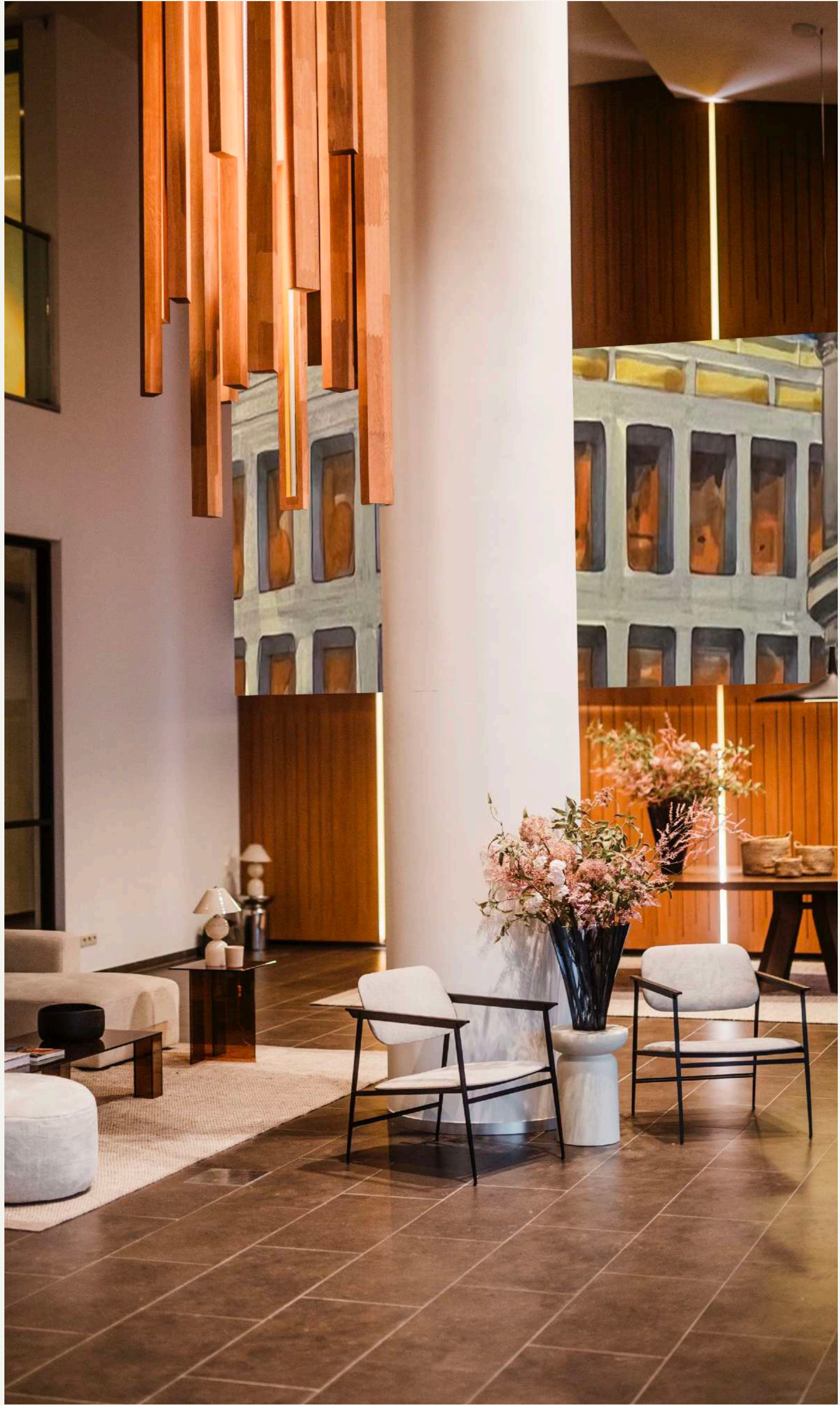
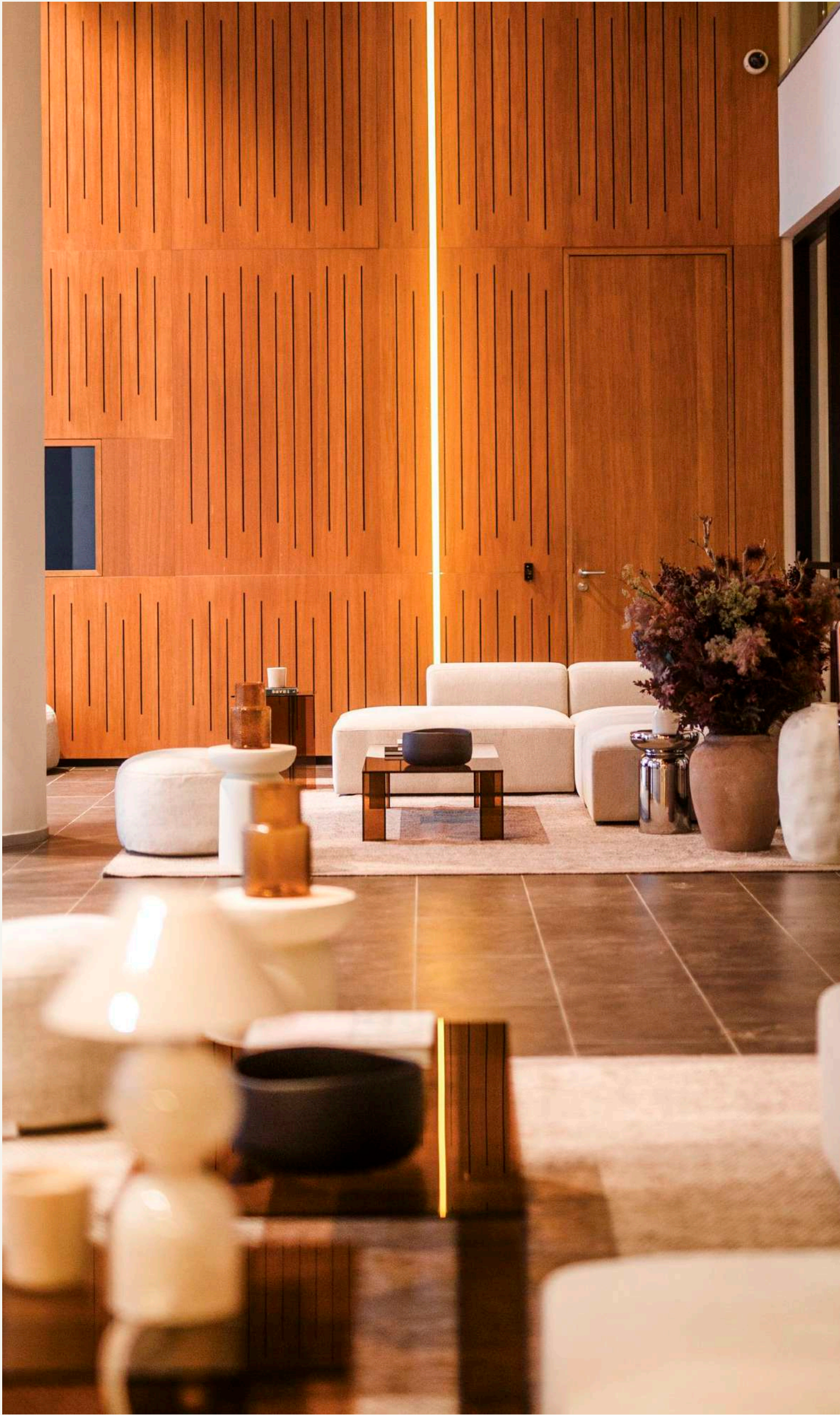
7 meeting rooms from 5 to 100 people

FOOD EXPERIENCES

Professional kitchen amenities & selected catering partners







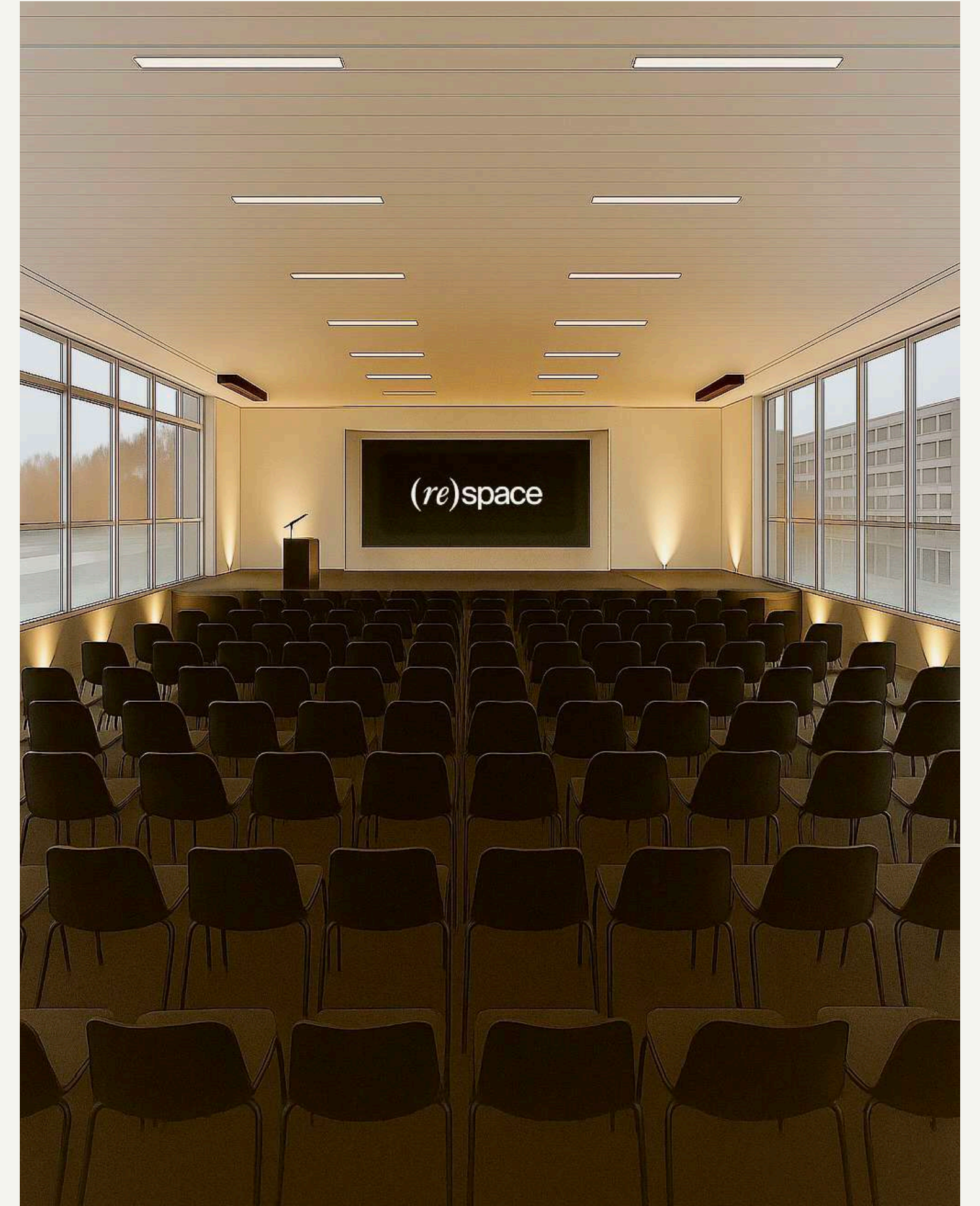
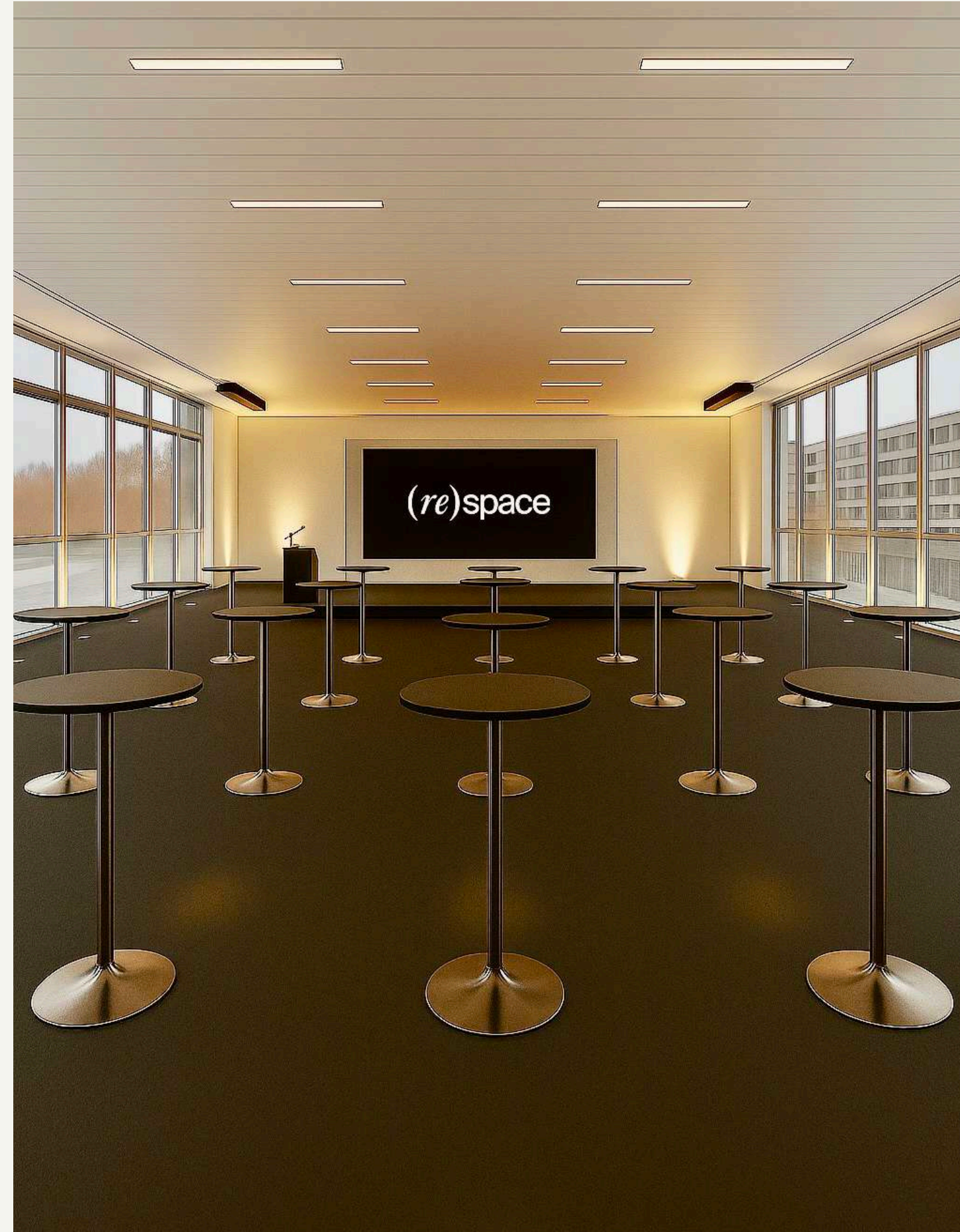
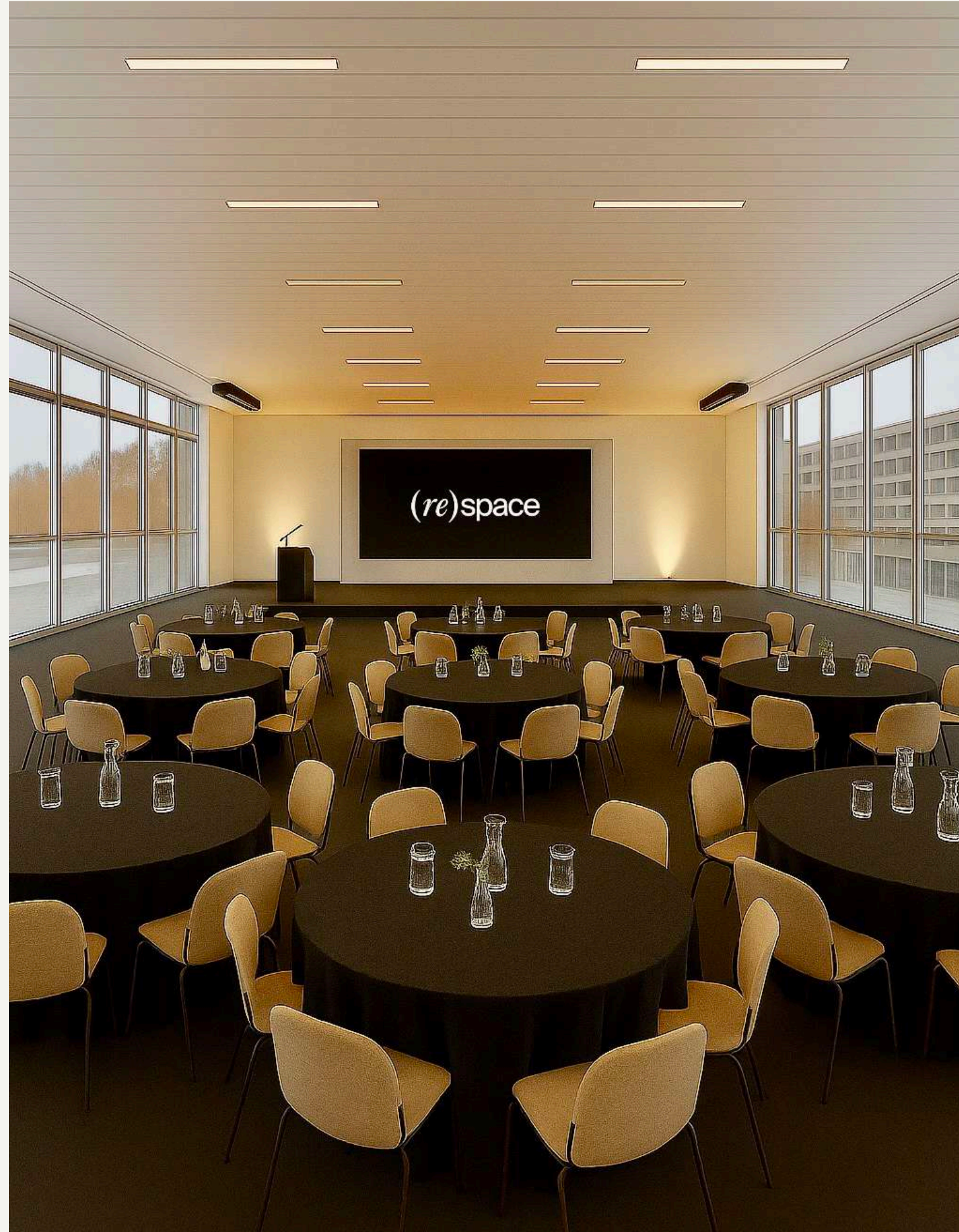
02

The *Event* Venues

(*gather*)

(re)space

(gather)



Event Area 2

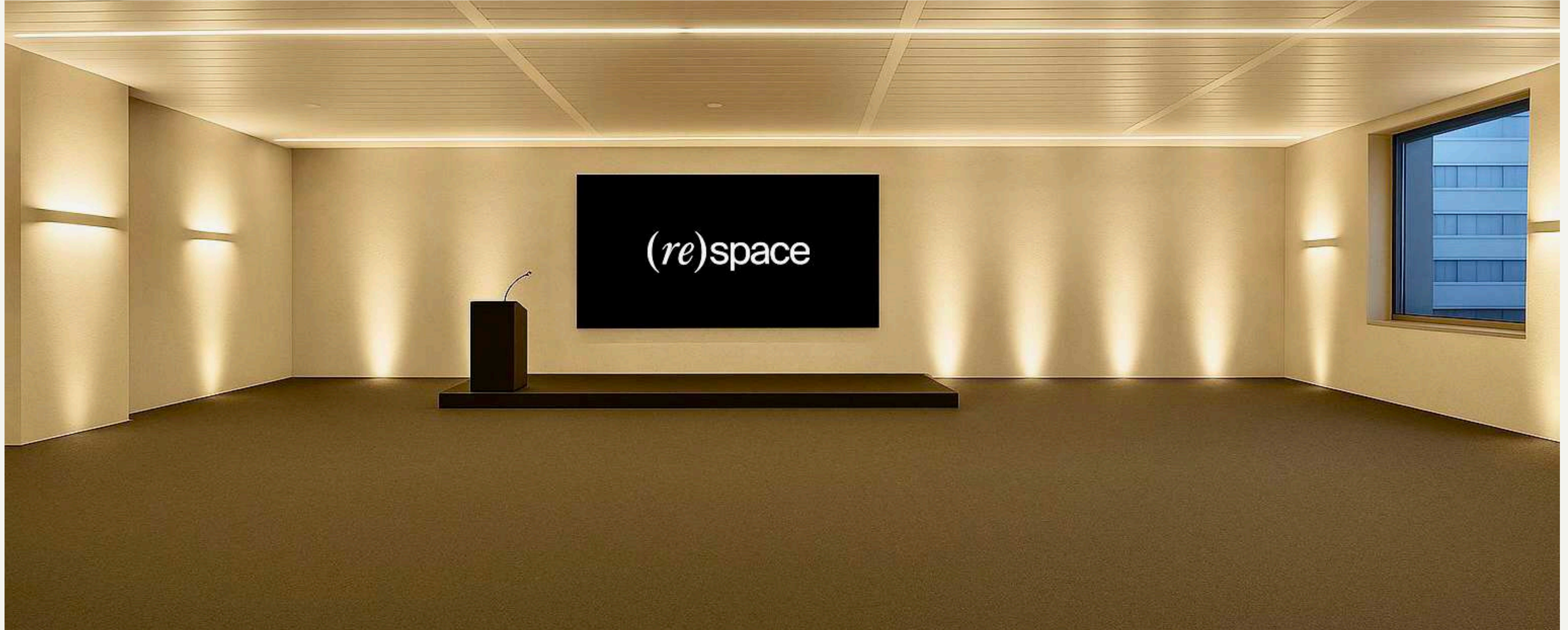
The second event space, larger and **fully modular**, offers **direct access to the spacious terrace**, making it ideal for up to 230 guests and perfect for conferences, receptions, or any event that blends indoor sophistication with an open-air ambiance.

 230 PEOPLE

 350 SQM

(re)space

(gather)



Event Area 3

+ WORKSHOP AREAS

The third room offers an **modular setting** that can be seamlessly combined with a 221 sqm **workshop area**, featuring **seven adaptable niches** that create distinct yet interconnected zones, perfect for collaborative sessions and creative team activities.

 110 PEOPLE

 115 + 221 SQM



Cocktail Area

The cocktail area provides a refined **reception setting** that comfortably accommodates around 100 guests. Designed as a natural **extension of our event spaces**, it offers a warm, open layout ideal for networking moments, informal gatherings, and post-conference receptions.

 113 SQM

03

The *Meeting* Rooms

(*meet*)

(re)space



Complementing the event spaces, (re)space Airport also offers a range of **plug-and-play & curated meeting rooms** accommodating between **5 and 100 participants**, ideal for board meetings, training sessions, and focused team discussions.

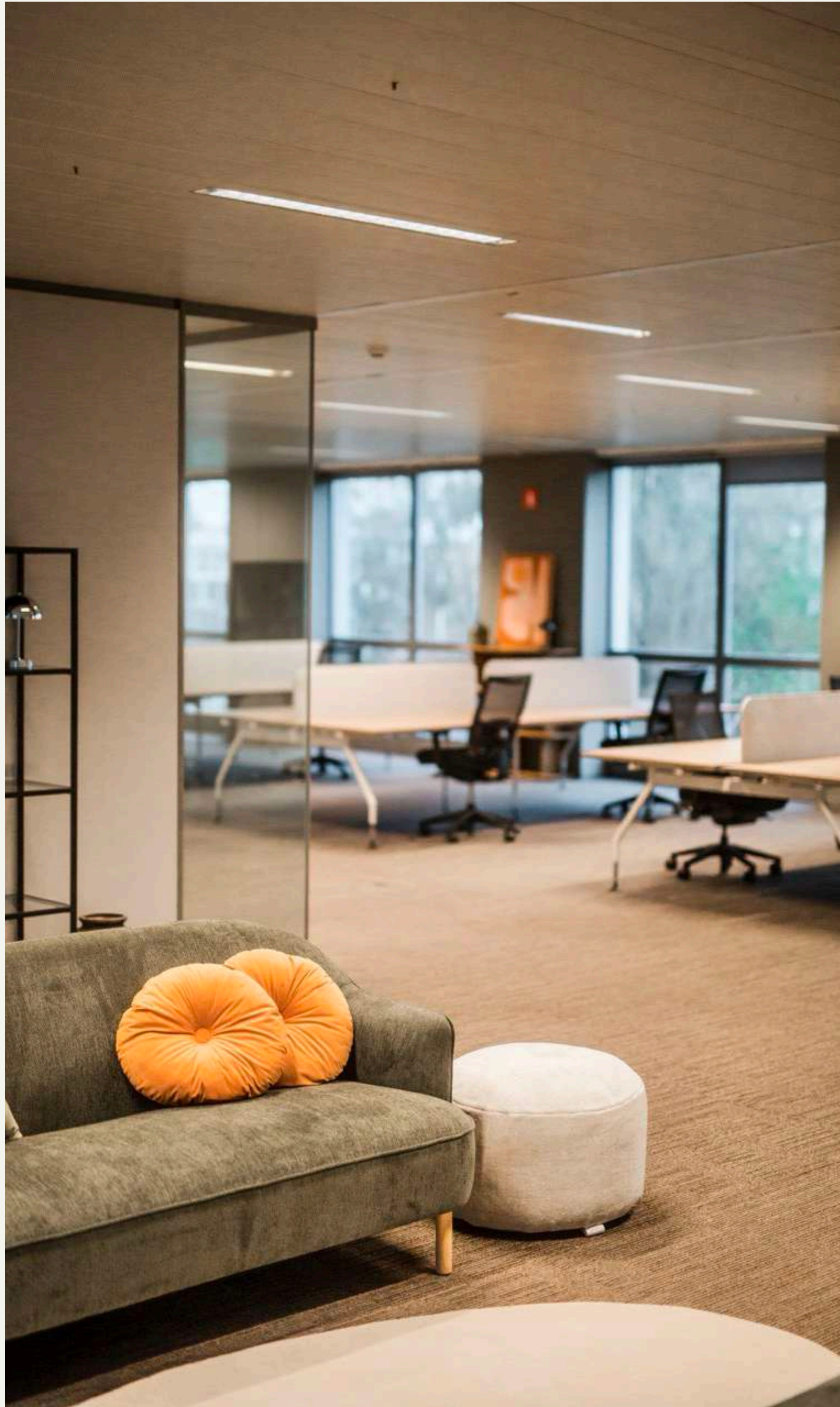
 **5 TO 100 PEOPLE**

 **7 MEETING ROOMS**

04

Flexible Private *Offices*

(work)



(re)think your workspace.

At (re)space Airport, we offer **flexible, high-quality office solutions** tailored to the needs of modern professionals and businesses. Our private offices **across five floors** provide a fully adaptable workspace, available **furnished or unfurnished**, for teams of any size. With **turnkey environments** that let you move in and work immediately, all you need to bring is your laptop.

Located just **minutes from Brussels Airport**, our offices combine functionality with a professional, **international-facing environment**, ideal for organisations working with global partners, travelling teams, or cross-border operations. Modern amenities, efficient layouts, and the option to **customise your space** ensure optimal comfort and productivity.

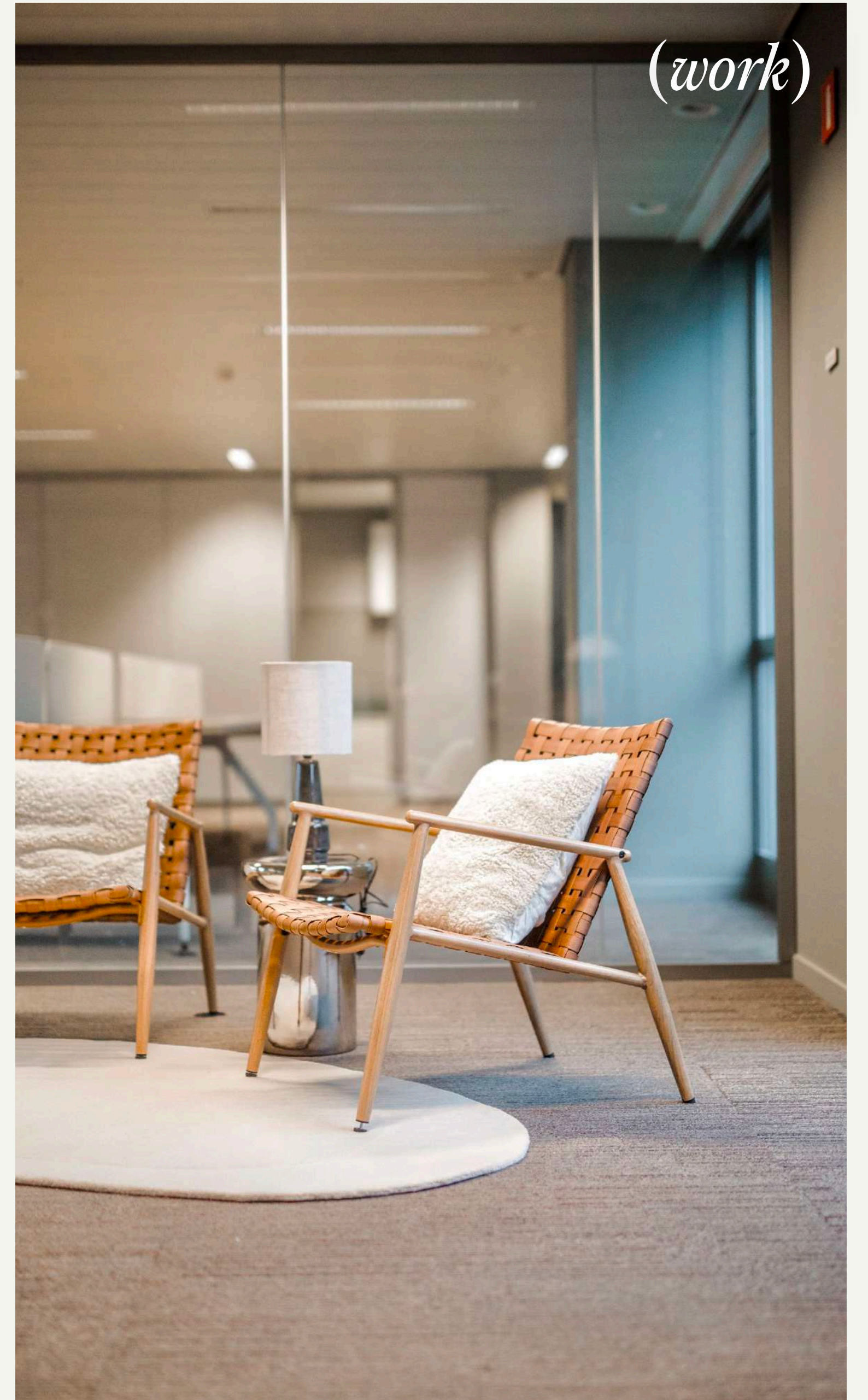
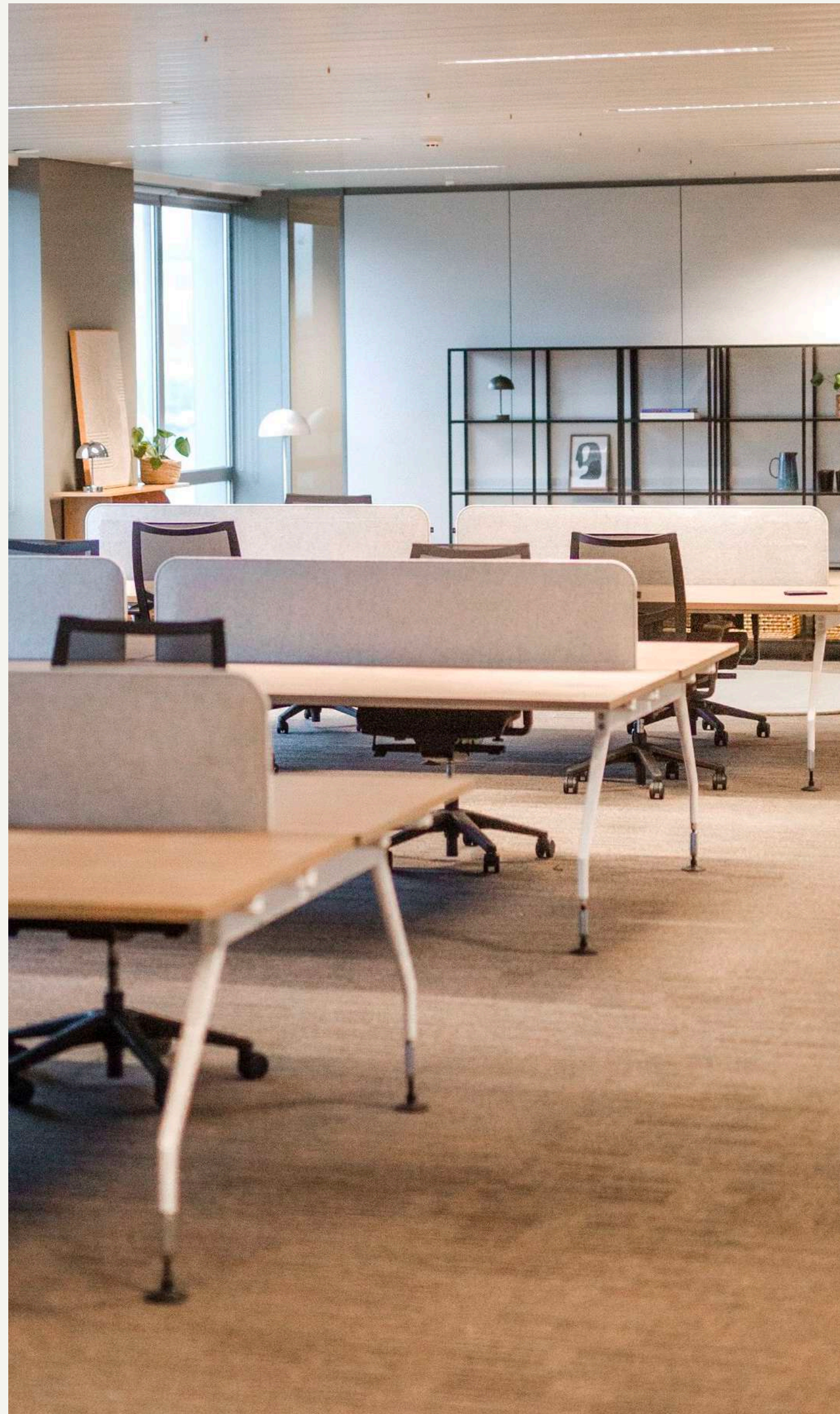
As part of a temporary occupation of the building, we offer a rare opportunity to access prime office space at **rates well below market standards**: a cost-effective, flexible solution that avoids long-term commitments.

Our **dedicated team** ensures a seamless experience from day one, supporting you at every stage to make your transition smooth, efficient, and hassle-free.

STARTING AT
175€ PER PERSON PER MONTH



(work)



05

Dedicated *Services*

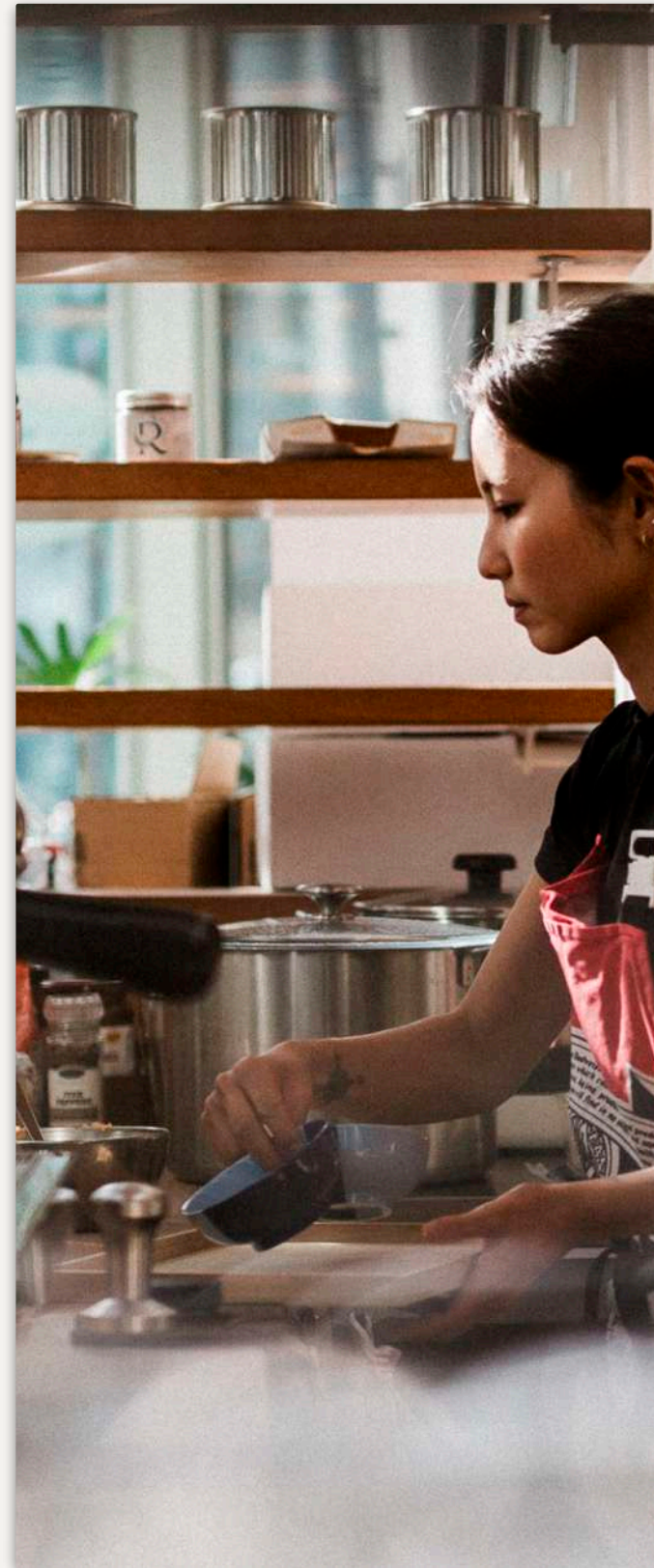
(*services*)



RECEPTION SOLUTIONS

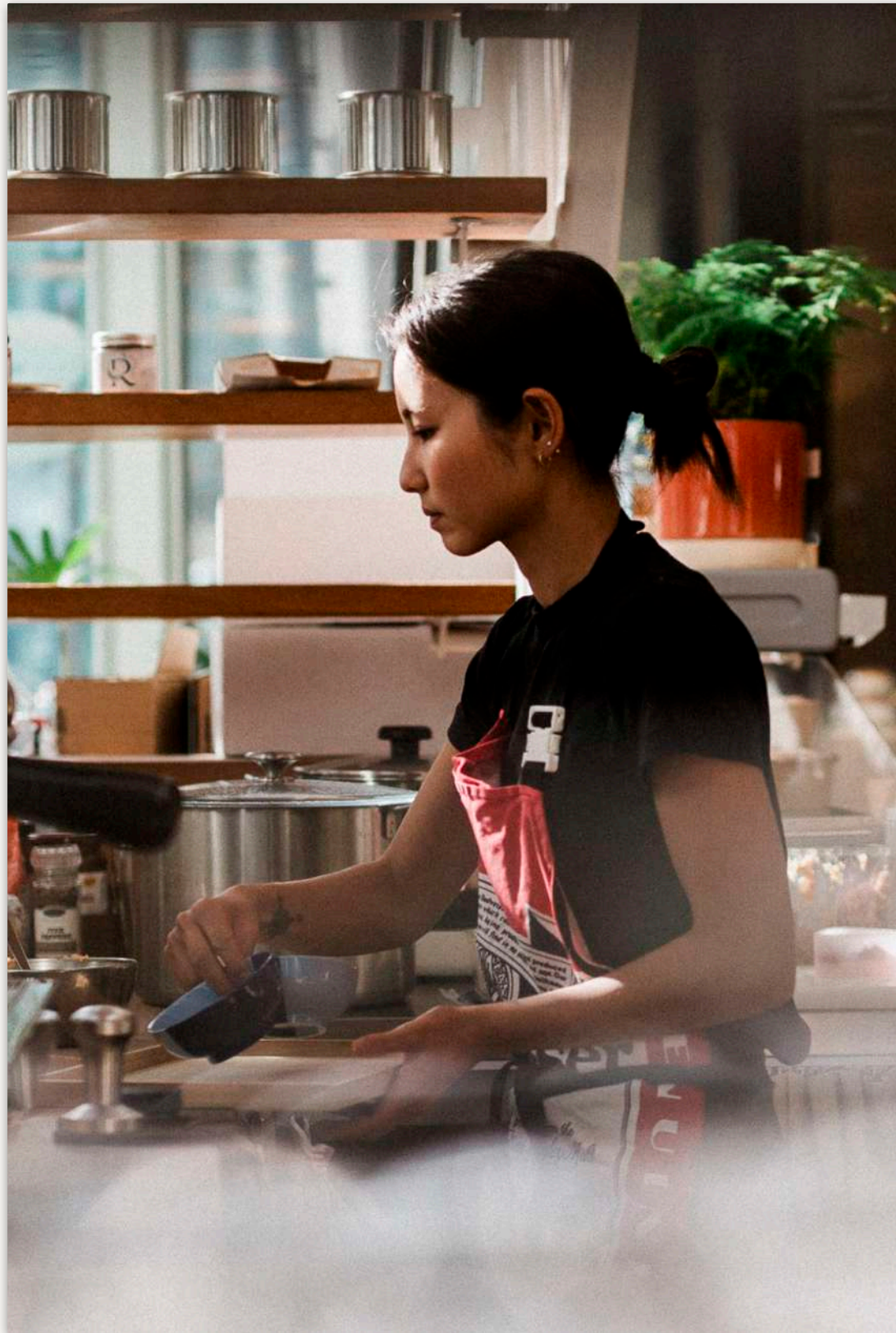
A dedicated **front-desk team** ensuring a warm welcome, seamless visitor management, and professional support throughout the day.

From greeting guests to handling inquiries, our reception service elevates your brand experience from the very first interaction.



N
IS

k team
ome, seamless
nd professional
e day.
o handling
service
perience
action.



FOOD
EXPERIENCES

Selection of **premium catering partners** for meetings & events.



CES

catering
& events.



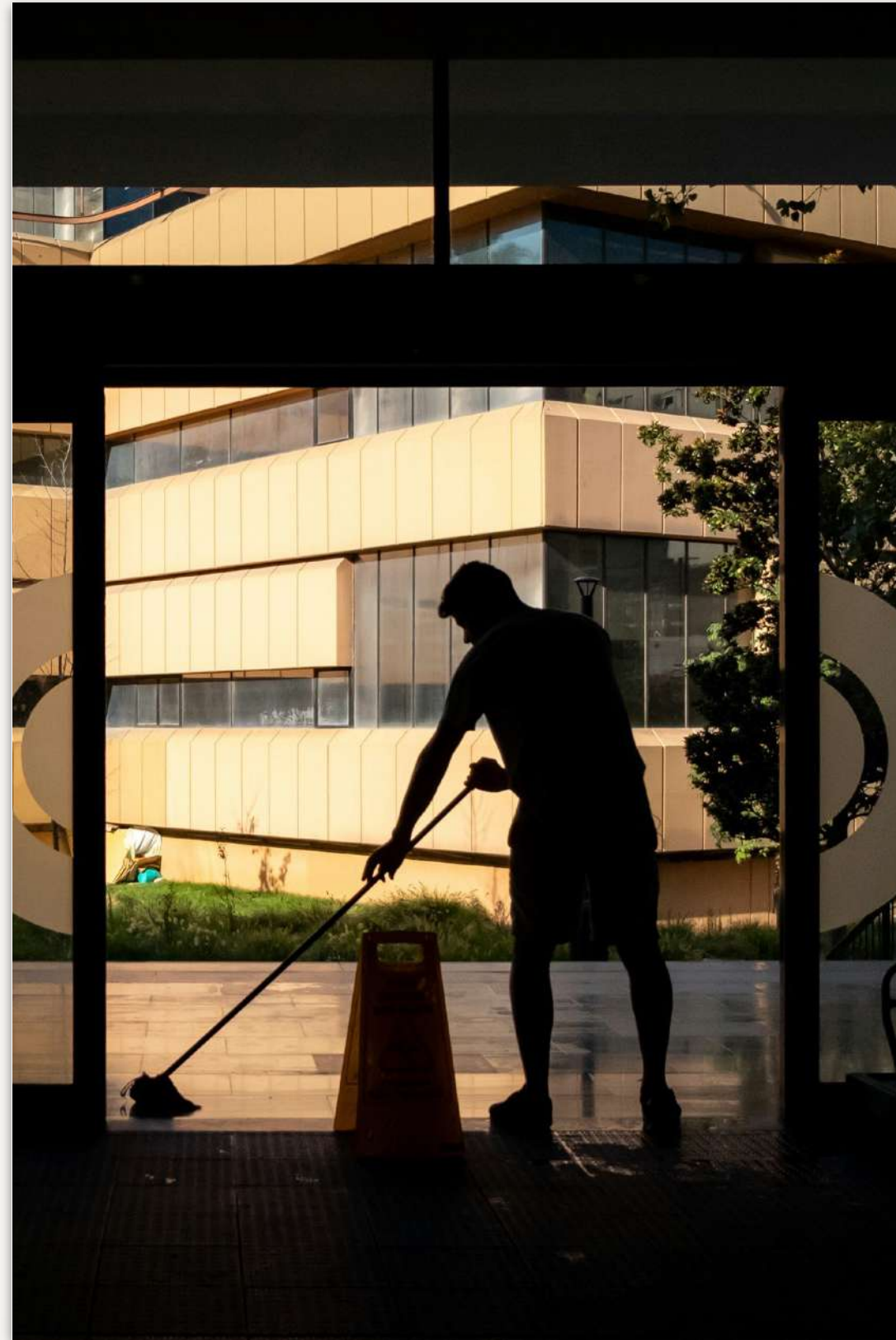
DESIGN & BUILD

A turnkey approach to workspace creation: **concept, design, construction, and delivery.** We build offices that are efficient, comfortable, and aligned with your company’s workflow, culture & identity.



(re)space

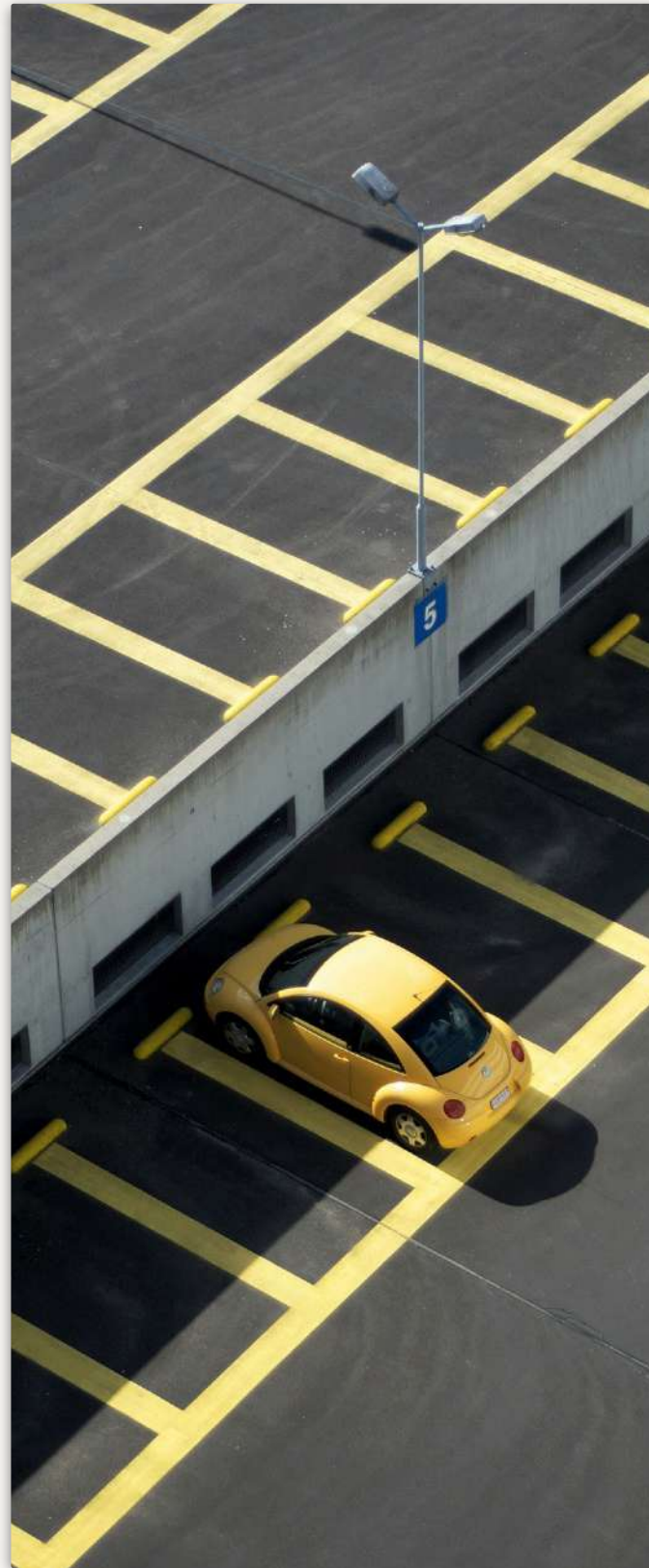
workspace
sign,
ivery.
re efficient,
ed with your
culture & identity.



CLEANING SERVICES

Our cleaning services ensure that every workspace, meeting room, and event area remains **impeccably maintained throughout the day**. From daily office cleaning and waste management to event resets and on-demand interventions, every task is handled with care and precision.

(services)

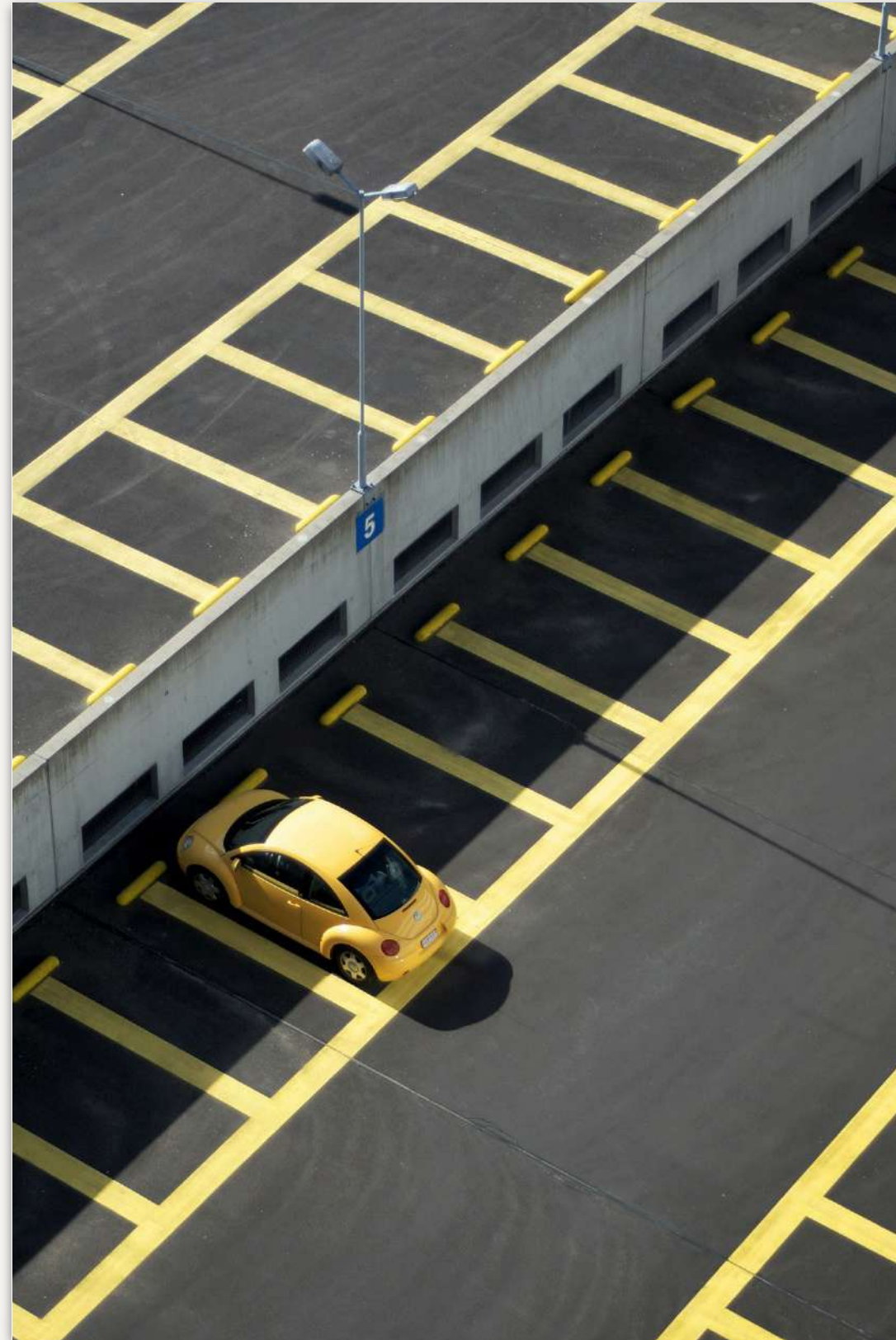


*(re)*space

(services)

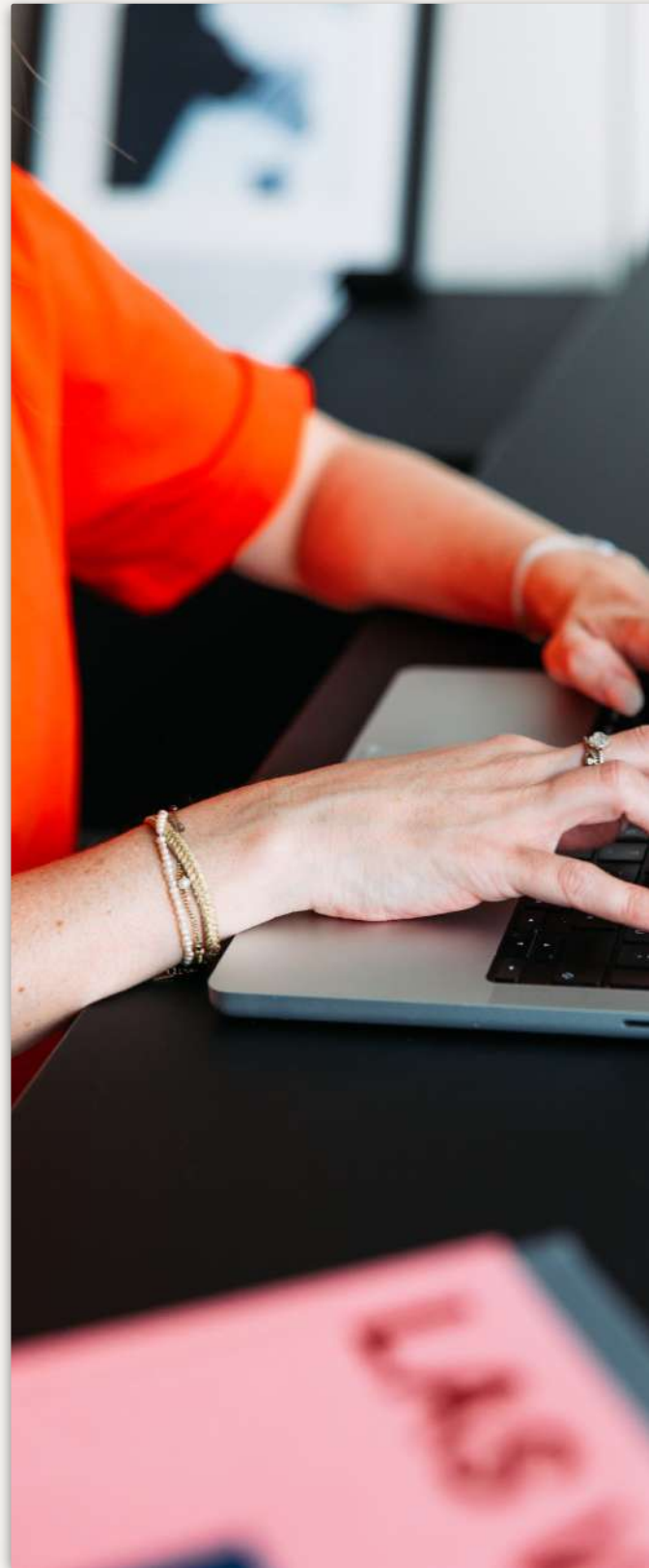
CES

catering
& events.



MOBILITY

- Parking lot
- Taxi partners
- Facilitating commutes



(re)space

(services)



& MORE

As hosting experts, we can make any dream come true. We tailor your experience to any demand and need.

(meet)

Julie Mertens

Business Development, Marcom
& Client Service Director

julie.mertens@respace.be

+32 472 21 56 70

