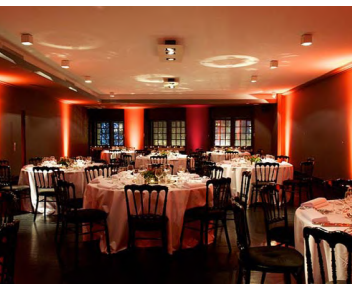
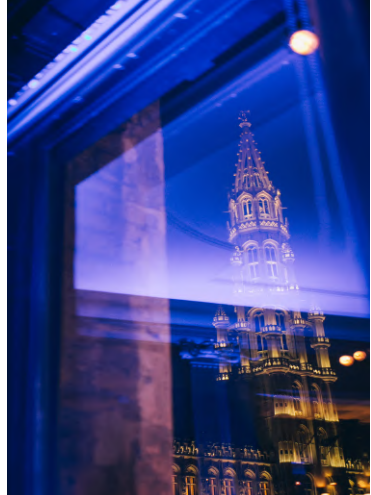


MAISON GRAND PLACE

Event Venue



CATALOGUE



INTRO

Hello

THE DESCRIPTION	—————	04
THE PLAN	—————	05
THE SPACES	—————	06
ground floor		
first floor		
THE CONTACT DETAILS	—————	10

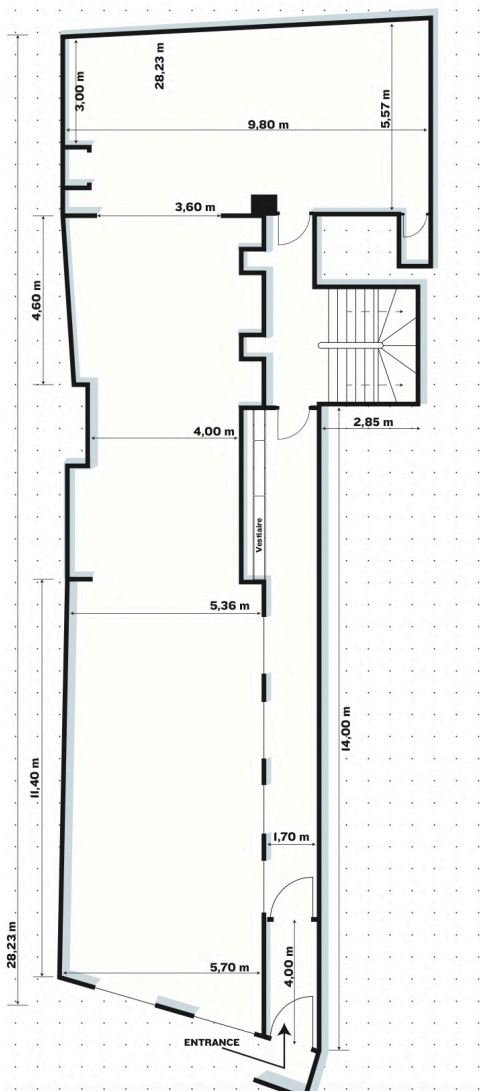
THE DESCRIPTION

ONE OF THE MOST BEAUTIFUL SQUARES IN THE WORLD

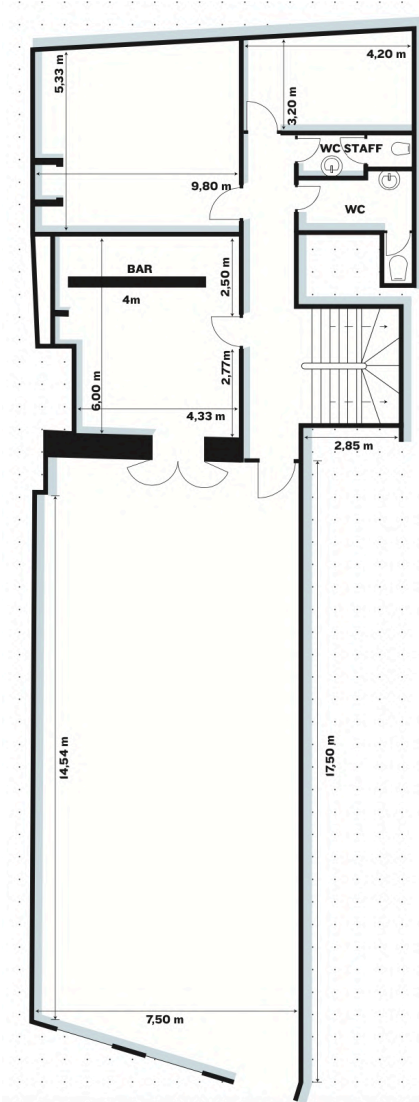
Located on Brussels' Grand-Place, this classic and elegant manor house is a historic, listed building — the only property on the Square to open its doors for an event. It offers a range of reception spaces across two levels



THE PLAN



GROUND FLOOR



FIRST FLOOR

THE SPACES

Ground floor

SUPERFICIE

160m²

COCKTAIL	250 persons
SEATED DINNER	150 persons
CONFERENCE	120 persons
WALKING DINNER	200 persons
EVENING PARTY	250 persons





THE SPACES

First floor

SUPERFICIE

130m²

COCKTAIL

150 persons

SEATED DINNER

130 persons

CONFERENCE

160 persons

WALKING DINNER

180 persons

EVENING PARTY

-







LET'S WORK
Together

+32 2 359 92 40

info@chou.be

www.chouxdebruxelles.be

Grand Place 19, 1000 Bruxelles